

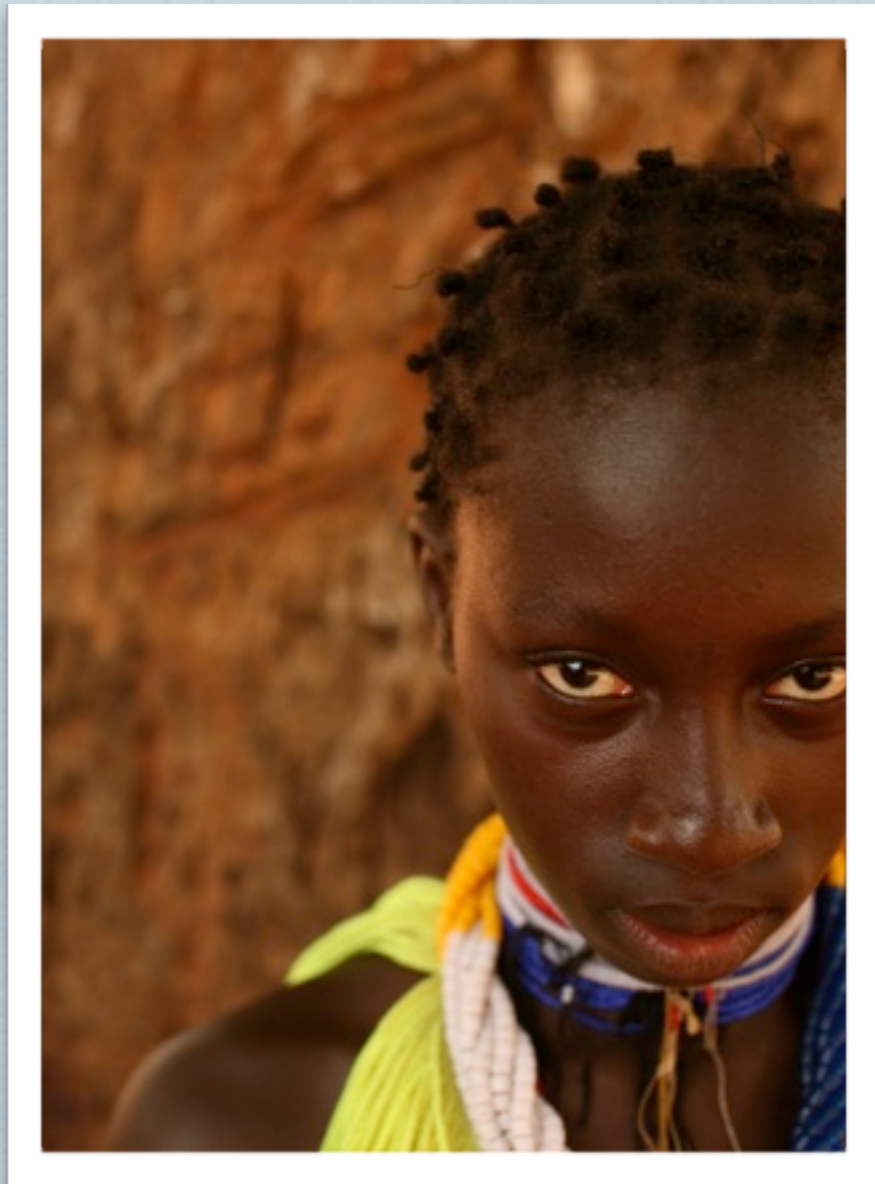


Primary Schools

Integrated Community Development Program
Orebok Foundation

Background

- ❖ The Bijagos importance achieved international recognition with the classification of the archipelago by UNESCO as a Biosphere Reserve.
- ❖ Local Natural and Cultural Heritage under threat by several different external factors.
- ❖ It's urgent to empower local communities in order to involve them as the main conservation agents of their own Natural and Cultural Heritage.



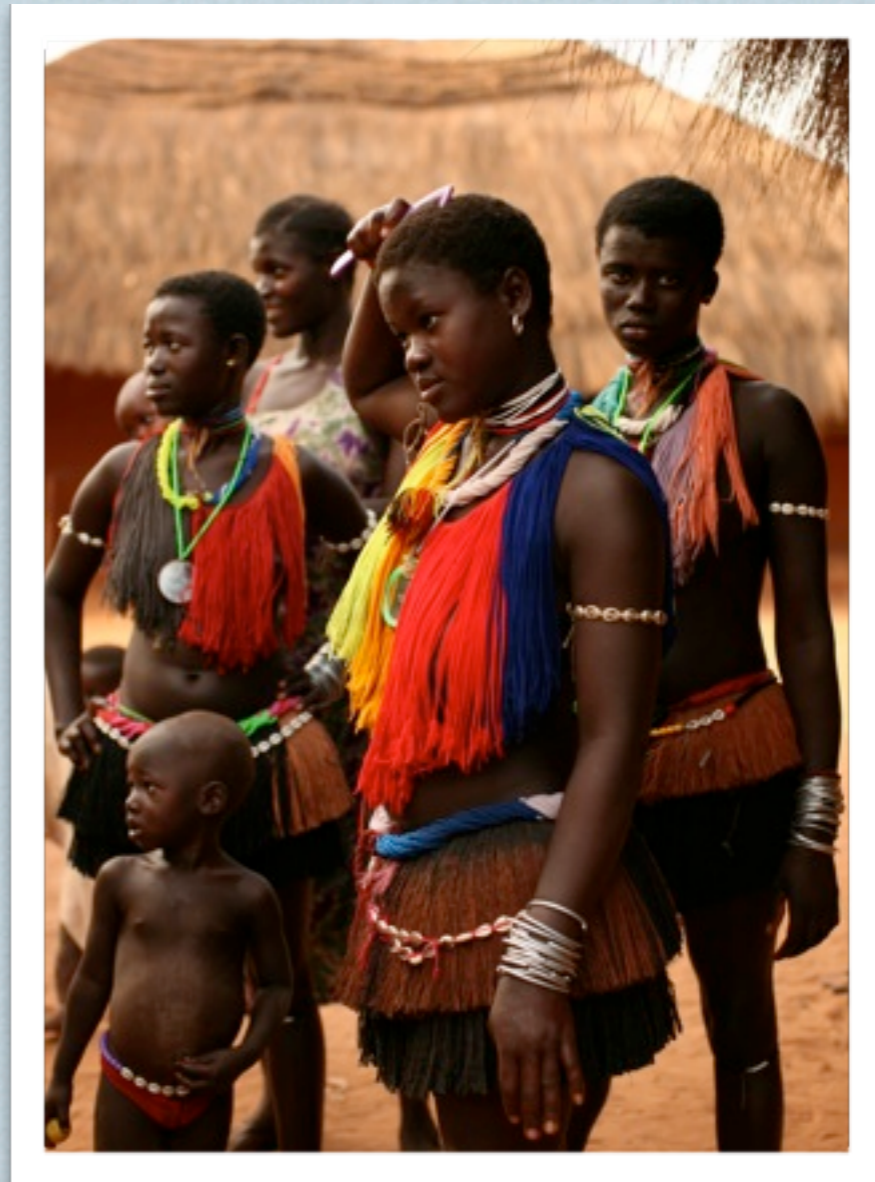
Réserve de biosphère de l'Archipel des Bijagos



55 - Carte de zonation de la réserve de biosphère Bolama-Bijagos

Objectives

- ❖ To help achieve in the archipelago the UN's Millennium Development Goals regarding primary education for all.
- ❖ To establish a priority list of communities where intervention is more urgent and needed.
- ❖ To develop a modular construction system for the primary schools that can be adapted to the different needs of each community.



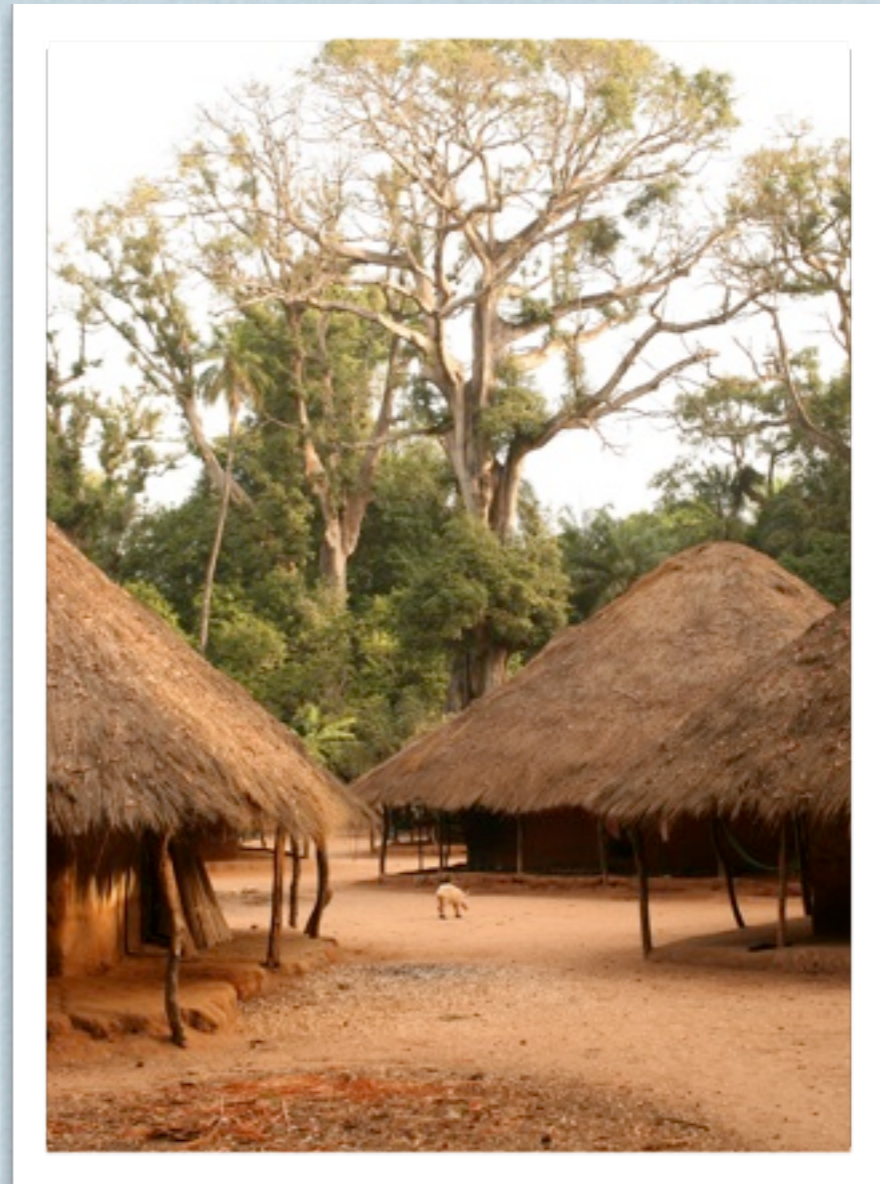
Priority criteria

- ❖ Most isolated and neglected communities.
- ❖ Where teachers have already been placed by the Ministry of Education but lack any school buildings or facilities.
- ❖ Strong community commitment to the project with trustable and dynamic local leaders.

Islands	Inhabitants*	Villages
Bolama	9000	41
Bubaque	5500	15
Canhambaque	2000	19
Canogo	200	2
Carache	500	2
Caravela	1000	5
Formosa	1500	14
Galinhas	1200	7
Imbone	100	1
Maió (Chediã)	500	2
Meneque	200	2
Nago	500	2
Orango Grande	1500	18
Orangozinho	500	5
Rubane	2000	18
Soga	800	5
Unhocomo	600	2
Unhocomozinho	100	1
Uno	4000	32
Uracane	1000	5
Total	32700	198
* Estimated numbers		

Modular system

- ❖ Low cost, easy to assemble or build.
- ❖ Adaptable to small and bigger communities.
- ❖ Incorporate as much local materials and construction techniques as possible or feasible.
- ❖ Minimum levels of waste and soil contamination with low construction footprint.
- ❖ Strong integration with local surroundings.



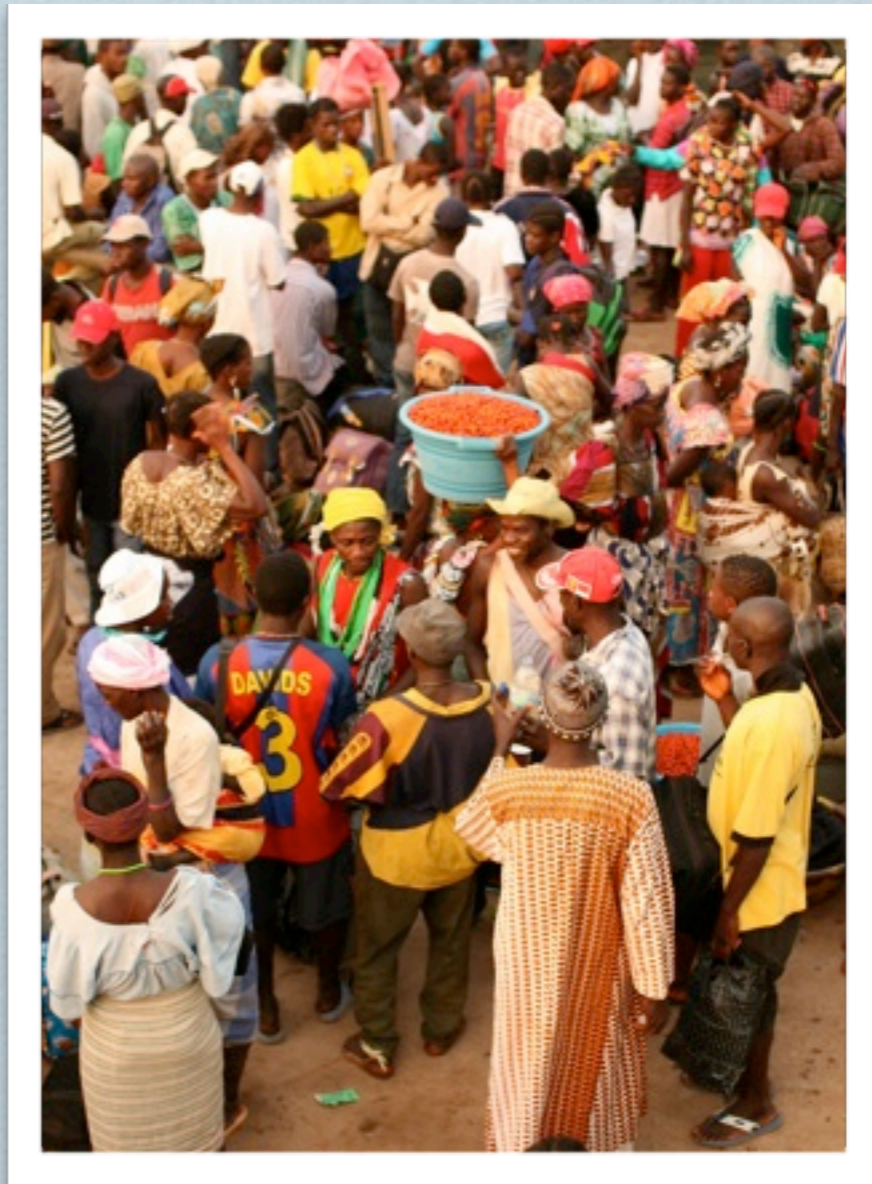
Equipment

- ❖ Because the classrooms will be used by a wide range of ages, furniture must take that into consideration.
- ❖ Energy when existent will be from own renewable source.
- ❖ A basic audiovisual kit can complement the standard equipment list when energy is also available.
- ❖ Sanitary installations should be considered as an optional complement.



Funding

- ❖ Funding is the major limitation in this Program and fully determines the speed of implementation and number of schools built.
- ❖ Donors, funding institutions and program partners can decide either to support a specific project or to contribute in general terms to the Program.
- ❖ Smaller scale projects are more easy to fund and faster to implement.



In progress

- ❖ Unhocomozinho island was selected to receive the first primary school under this Program.
- ❖ One classroom for 20 students fulfills the community needs from the 1st-4th grade.
- ❖ A prefab construction solution was chosen to simplify operations in the first intervention.
- ❖ After successive delays we plan to be able to implement this project before the rainy season (June 2011).



Next implementations

- ❖ Unhocomo island, 2 communities.
- ❖ Carache island, 2 communities.
- ❖ Caravela island, 5 communities.
- ❖ Soga island, 5 communities.

